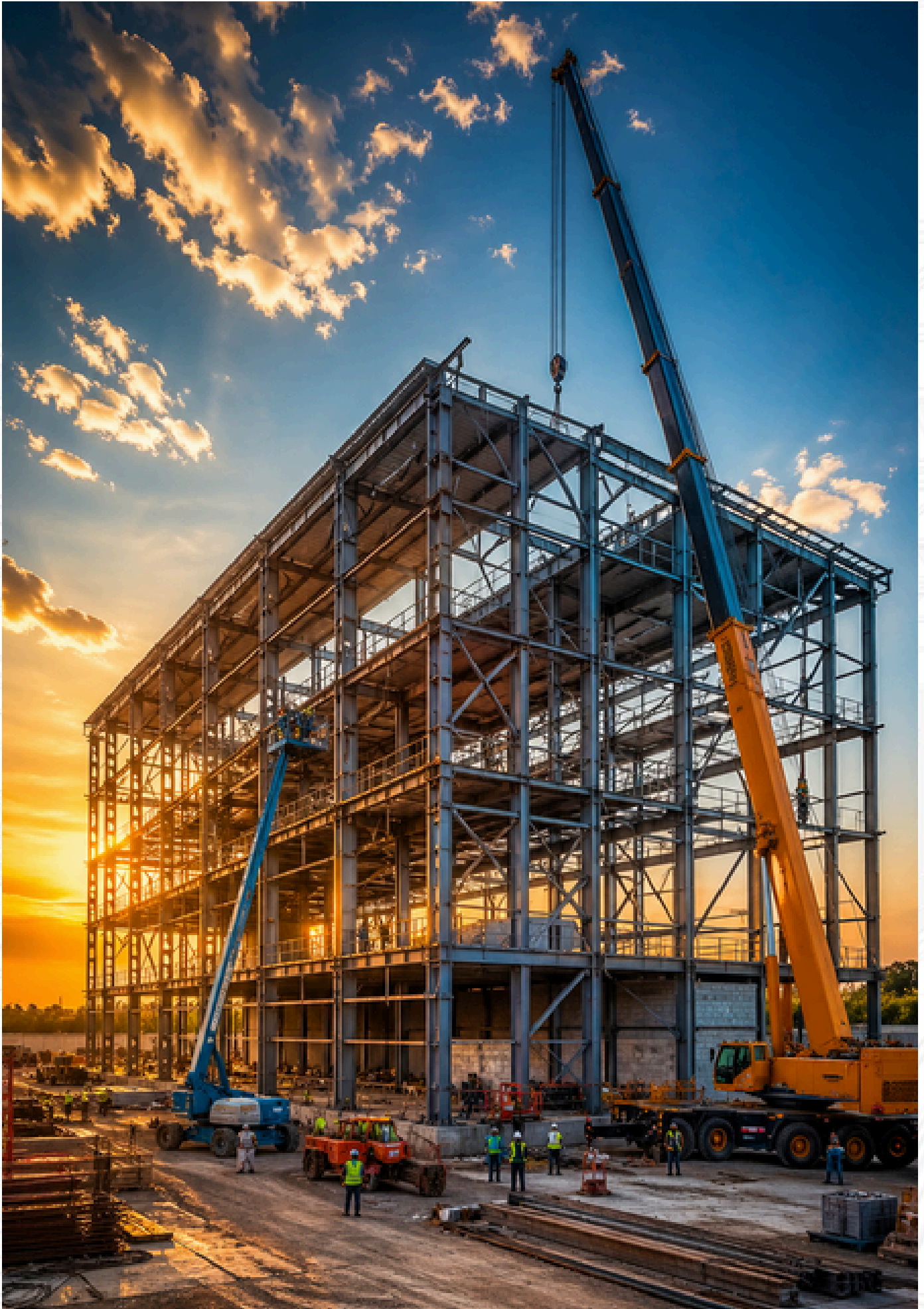


POWERING PROGRESS

DELIVERING EXCELLENCE





Building the Future, One Beam at a Time.

About Us

Aavishkar - The Metal Designer is a forward-thinking engineering company specializing in **Pre-Engineered Building solutions**, delivering world-class steel structures that combine innovation, precision, and performance.

Built on a foundation of technical expertise and design excellence, Aavishkar partners with clients across industrial, commercial, and infrastructure sectors to create highly efficient, durable, and future-ready buildings. Every project is approached with a deep commitment to engineering integrity, optimized design, and superior execution.

Our integrated capabilities - spanning **design, engineering, manufacturing, and installation** - enable us to deliver seamless turnkey solutions tailored to the unique requirements of each client. By leveraging advanced technologies and global best practices, we ensure structures that meet the highest standards of quality, safety, and sustainability.

At Aavishkar, we go beyond construction - we deliver value through intelligent design, faster project timelines, and cost-efficient solutions, without compromising on strength or aesthetics.

Driven by a culture of excellence and continuous improvement, we are committed to building long-term partnerships and delivering structures that stand as a testament to reliability, innovation, and trust.

Our Expertise



Industrial Buildings



Warehousing & Logistics
Parks



Commercial Complexes



Infrastructure Projects



Vision

At Aavishkar, our vision is to emerge as a globally recognized leader in Pre-Engineered Building solutions by consistently setting new benchmarks in innovation, engineering excellence, and structural reliability. We aspire to redefine the standards of modern steel construction through cutting-edge technology, precision-driven design, and an unwavering commitment to quality. By building trust through every project we deliver, we aim to create enduring value for our clients, partners, and the infrastructure landscape we help shape.

MISSION

Our mission is to deliver high-performance, cost-efficient steel structures that seamlessly combine strength, functionality, and modern design. We are committed to maintaining the highest international engineering standards while ensuring every project is executed with precision, efficiency, and strict adherence to timelines. Through a client-centric approach, we focus on building long-term partnerships grounded in transparency, reliability, and consistent performance, while continuously evolving our processes to meet the dynamic demands of the construction industry.

Our Services

We provide complete turnkey solutions including:



Design & Engineering

Advanced structural design using industry-leading software and engineering practices.



Manufacturing

Precision fabrication using high-grade steel and automated processes.



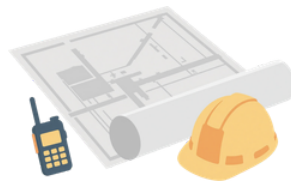
Project Management

End-to-end planning, coordination, and execution for seamless delivery.



Logistics

Efficient supply chain ensuring timely delivery of materials.



Erection & Installation

Safe and accurate on-site assembly by experienced professionals.

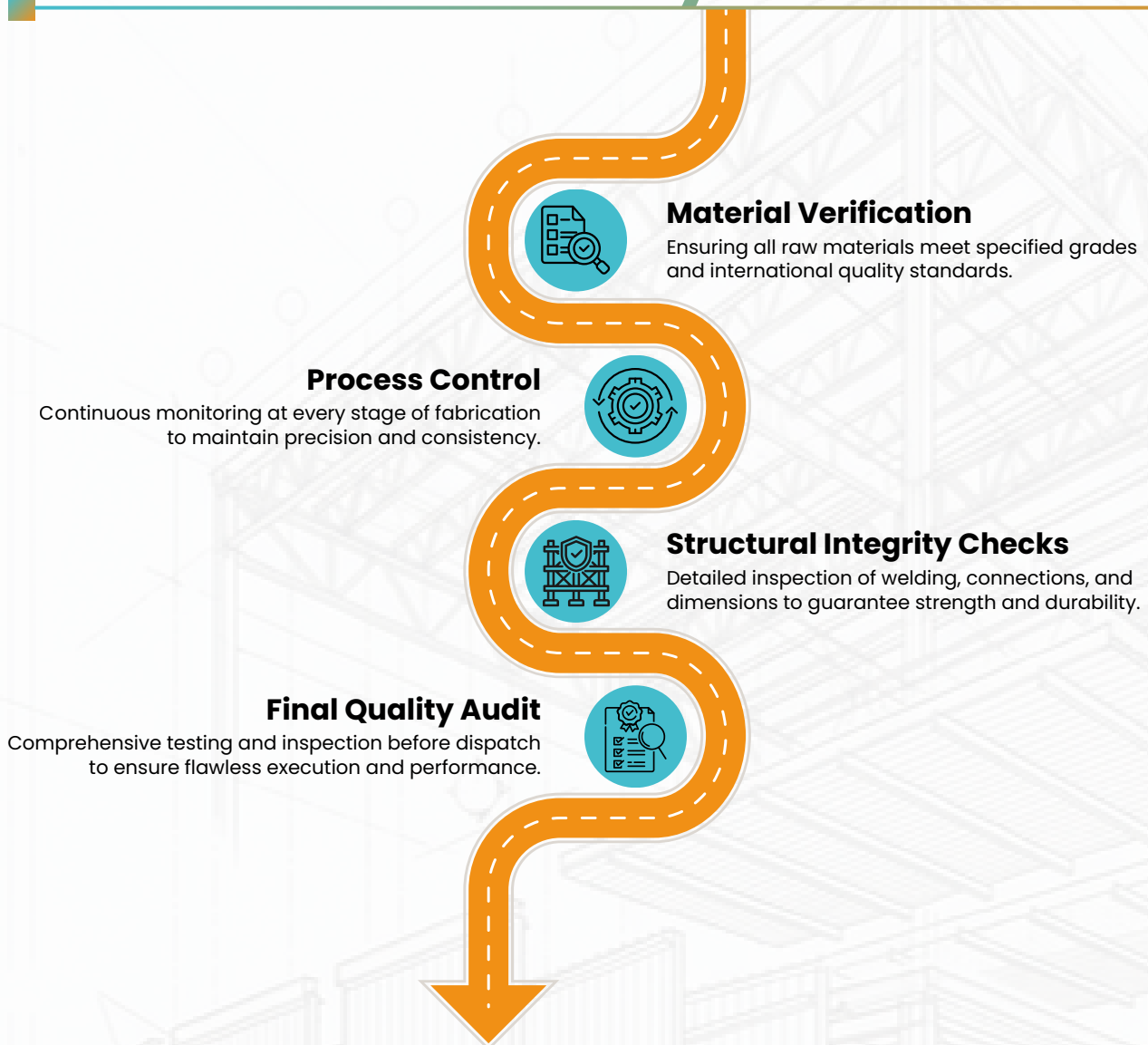


Quality Excellence

Ensuring world-class standards through rigorous inspection, testing, and compliance.

At **Aavishkar - The Metal Designer**, we don't just construct buildings - we engineer enduring assets that define performance, precision, and trust. Every project is driven by a relentless commitment to quality, innovation, and timely delivery, ensuring structures that stand strong against time and demand. Backed by advanced engineering, disciplined execution, and a client-first approach, we deliver solutions that are not only built to last but designed to add long-term value to your business. With Aavishkar, you partner with a company where excellence is standard and trust is built into every structure.

Quality Excellence



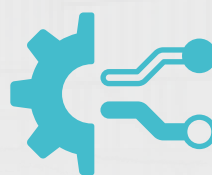
At **Aavishkar - The Metal Designer**, quality is not a checkpoint - it is an integral part of our process. Through rigorous inspection protocols, advanced testing methods, and strict adherence to global standards, we ensure every component reflects precision, strength, and reliability. Our commitment to uncompromising quality guarantees that each structure delivered stands as a benchmark of engineering excellence and long-term performance.



Customer-Centric Approach



Continuous Improvement



Process Integration



Team Accountability

PDCA Cycle

At **Aavishkar** – The Metal Designer, we follow the globally recognized **PDCA Cycle** to ensure continuous improvement and operational excellence across every project.



PRE-ENGINEERED BUILDING

Pre-Engineered Buildings are an advanced construction system consisting of precisely designed steel components that work together to deliver **Strength, Flexibility, and Efficiency**.

◆ Primary Structural Members

Primary built-up members (H-Beams) are manufactured from high-quality hot-rolled steel plates of required sizes, conforming to ASTM A572 Grade 345 MPa standards. These plates are precision-cut using advanced gas cutting techniques.

The fabrication process involves continuous welding on one side and stitch welding at regular intervals on the other, forming robust and reliable H-beams. These are custom-built sections, allowing flexibility to meet virtually any design requirement.

Splice plates are welded at the ends of different H-beam sections, and all sections are assembled using high-strength bolting to create a complete structural frame. All primary members are designed to meet a minimum yield strength of 345 MPa, ensuring durability and safety.

◆ Custom Engineering Advantages

Premier Pre-Engineered Steel Buildings are fully customizable and engineered to maximize space utilization while maintaining superior strength and safety standards.

Building Specifications

Building Width

Distance from the outside of the eave strut of one sidewall to the outside of the eave strut of the opposite sidewall.

Building Length

Distance between the outer flanges of end wall columns.

End Bay Length

Distance from the outer flange of end wall columns to the centerline of the first interior frame columns.

Interior Bay Length

Distance between the centerlines of two adjacent interior main frame columns (typically ranging from 6m, 7.5m, 9m to 15m).

Building Dimensions

Building Height

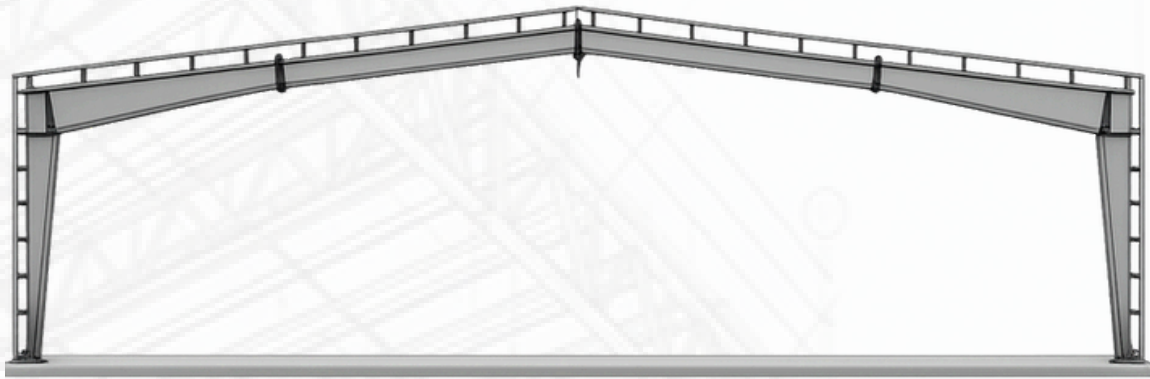
Measured as the eave height, which is the distance from the finished floor level to the top of the eave strut. It can extend up to 30 meters.

For recessed or elevated floors, the height is measured from the finished floor level.

Roof Slope

The angle formed by the roof with respect to the horizontal, commonly maintained at 1:10.

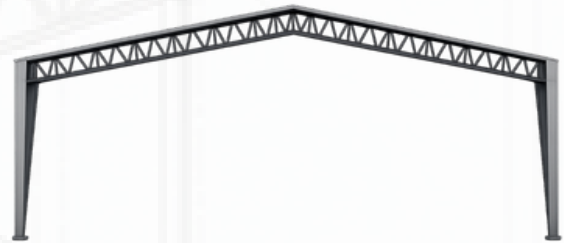
OUR COMMITMENT Where Safety is a Priority Our Team, Our Strength.



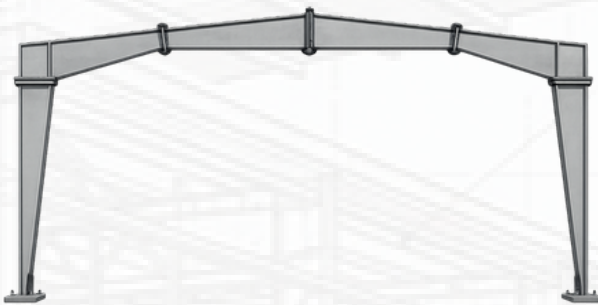
TYPICAL CROSS SECTION



BUILT-UP CURVED RAFTER (BU)



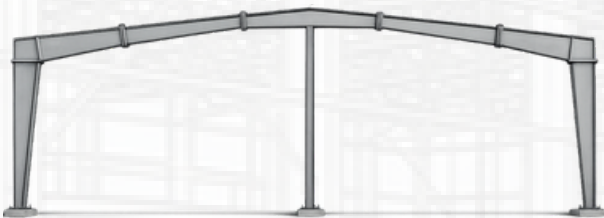
PEBHYBRID (PH)



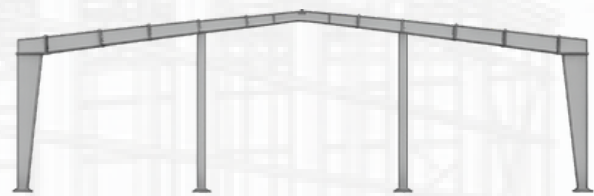
CLEAR SPAN (CS)



SINGLE SLOPE (SS)



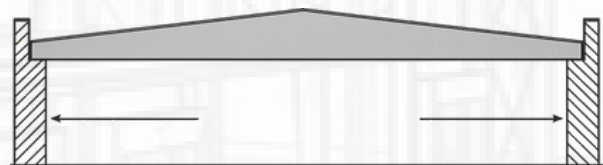
MULTI-SPAN "1" (MS-1)



MULTI-SPAN "2" (MS-2)



MULTI-GABLE (MG)



ROOF SYSTEM (RS)

Complete Solution

End-to-End Excellence in Pre-Engineered Building Systems

At Aavishkar – The Metal Designer, we don't just build structures – we deliver complete, integrated engineering solutions designed for performance, efficiency, and long-term value.

From concept to commissioning, we take single-point responsibility for the entire project lifecycle, ensuring seamless coordination, precision execution, and unmatched quality standards.

Our Core Capabilities

Manufacturing Excellence

State-of-the-art fabrication processes using premium-grade steel and precision technology. Every component is engineered for durability, accuracy, and superior performance.

Project Management

Strategic planning, execution, and monitoring to ensure on-time delivery and operational excellence. We manage every detail with a focus on quality, safety, and efficiency.

Logistics & Supply Chain

Efficient and reliable logistics systems ensuring timely delivery of materials across project locations without delays.

Erection & Installation

Expert on-site execution by skilled professionals, ensuring structural integrity, safety compliance, and flawless assembly.

Roofing Wall Cladding

Engineered Protection. Superior Performance. Modern Aesthetics.

At Avishkar – The Metal Designer, our roofing and wall cladding systems are designed to deliver exceptional durability, structural efficiency, and long-lasting visual appeal.

Built using advanced materials and precision engineering, our cladding solutions provide a robust external envelope that protects your building against harsh environmental conditions while enhancing its architectural identity.

Material Specifications

We use high-performance Galvalume Steel (AZ150 coating) to ensure superior corrosion resistance and longevity.

- Base Material Thickness: 0.50 mm
- Coating: AZ150 (150 gm/m² Aluminum-Zinc Alloy)
- Exterior Finish: 25 microns weather-resistant paint coating
- Interior Finish: 5–7 microns epoxy-compatible primer
- Standards Compliance: ASTM A792 / ASTM A1392

Each panel is manufactured with precision profiling to ensure perfect fit, alignment, and structural stability.

Advanced Cladding Technology

Our roofing and wall systems are engineered to deliver:

High Corrosion Resistance – Ideal for industrial and coastal environments

Superior Weather Protection – Resistant to heat, rain, and wind loads

Thermal Efficiency – Helps regulate internal temperature

Leak-Proof Performance – Engineered joints for water-tight sealing

Long Span Capability – Reduces structural load and installation time

Design Flexibility

We offer a range of modern cladding profiles and color options to match your project's architectural vision.

- Multiple profile configurations
- Dual-tone and customized color finishes
- Integration with insulation systems
- Compatibility with skylights, ventilators, and accessories

Our systems combine functionality with contemporary industrial aesthetics.

Precision Installation

Our expert erection team ensures every panel is installed with:

- Accurate alignment
- Secure fastening systems
- Structural integrity compliance
- Clean, high-finish appearance

This results in a seamless and maintenance-efficient building envelope.

Why Aavishkar Cladding Systems

- Premium Grade Raw Materials
- Engineered for Long-Term Performance
- Low Maintenance & High Durability
- Faster Installation
- Optimized Cost Efficiency

Built To Perform Designed To Last

Aavishkar's roofing and cladding systems are not just coverings - they are a critical performance layer that ensures your building remains strong, efficient, and visually impactful for years to come.

Mezzanine Floor System

Maximizing Space. Enhancing Efficiency. Enabling Growth.

At **Aavishkar – The Metal Designer**, our mezzanine floor systems are designed to unlock the full potential of your existing structure by creating additional functional space without expanding your building footprint.

Engineered with precision and built using high-strength steel decking integrated with reinforced concrete slabs, our mezzanine solutions offer a robust and reliable platform for a wide range of industrial and commercial applications.

Whether utilized for storage, operational areas, or office spaces, each mezzanine system is customized to ensure optimal load-bearing capacity, structural stability, and seamless integration with the overall building design.

Our approach focuses on delivering intelligent space optimization that enhances workflow efficiency while maintaining cost-effectiveness. By transforming unused vertical space into productive areas, we enable businesses to scale operations with flexibility and confidence.

With Aavishkar mezzanine systems, you gain more than just additional space – you gain a smarter, more efficient infrastructure designed to support long-term growth and performance.



Multi-Storeyed Buildings

Vertical Expansion. Engineered for Strength. Designed for Performance.

At Aavishkar – The Metal Designer, we deliver advanced multi-storeyed building solutions that redefine how modern industrial and commercial spaces are built. Our structures are engineered to maximize land utilization while ensuring superior strength, stability, and long-term performance.

Designed using high-grade structural steel and precision engineering techniques, our multi-storeyed systems provide the ideal solution for projects requiring vertical expansion without compromising on efficiency or safety. Each structure is carefully analyzed and optimized to handle complex load conditions, ensuring exceptional structural integrity across multiple levels.

From manufacturing facilities and warehouses to commercial complexes and institutional buildings, our multi-storeyed solutions are tailored to meet diverse functional requirements. We integrate intelligent design with modern construction practices to create spaces that support operational efficiency, scalability, and future adaptability.

With a strong focus on quality, safety, and timely execution, Aavishkar ensures seamless project delivery from concept to completion. Every detail is executed with precision, resulting in structures that not only meet but exceed industry standards.

At Aavishkar, we don't just build upwards – we build smarter, stronger, and more efficient structures that empower businesses to grow with confidence.



Turnkey Solutions

Single-Point Responsibility. Seamless Execution. Assured Performance.

At Aavishkar – The Metal Designer, our turnkey solutions are designed to deliver complete project ownership with unmatched efficiency and accountability. We provide fully integrated services that cover every stage of the project lifecycle – from concept development and detailed engineering to manufacturing, logistics, and final installation.

Our approach eliminates the complexity of dealing with multiple vendors by offering a single, reliable partner responsible for delivering the entire solution. This ensures streamlined communication, faster decision-making, and consistent quality across every phase of execution.

Backed by a team of experienced engineers, project managers, and skilled professionals, we ensure that each project is executed with precision planning, strict quality control, and adherence to timelines. Every component is engineered, manufactured, and assembled to meet the highest standards of safety, durability, and performance.

At Aavishkar, we focus on delivering not just structures, but complete infrastructure solutions that are efficient, cost-effective, and future-ready. Our turnkey model is built to provide clients with confidence, clarity, and complete peace of mind.

With Aavishkar, you gain more than a service provider – you gain a trusted partner committed to delivering excellence from start to finish.





Why Choose Aavishkar

Choosing the right partner for your Pre-Engineered Building project is critical to achieving long-term performance, cost efficiency, and structural reliability. At Aavishkar - The Metal Designer, we bring together engineering expertise, advanced manufacturing capabilities, and a deep understanding of industrial requirements to deliver solutions that go beyond expectations.

Our approach is built on precision, accountability, and a commitment to excellence at every stage of the project. From initial design to final execution, every detail is carefully engineered to ensure seamless integration, superior quality, and consistent performance. We take complete ownership of the process, allowing our clients to focus on their core business while we deliver infrastructure that supports growth and efficiency.

What sets Aavishkar apart is not just what we build, but how we build it – with integrity, innovation, and a relentless focus on delivering value. Our structures are designed to stand the test of time, combining strength, functionality, and modern aesthetics to create spaces that perform today and adapt for the future.

With Aavishkar, you don't just get a contractor – you gain a long-term partner committed to building with purpose, precision, and trust.



Building Accessories

Integrated Details. Enhanced Performance. Complete Solutions.

At AAavishkar - The Metal Designer, building accessories are not treated as secondary elements - they are an integral part of the overall structural system, engineered to enhance functionality, efficiency, and long-term performance.

Every accessory is carefully selected and seamlessly integrated into the building design to ensure optimal compatibility, durability, and operational effectiveness. From environmental control to structural finishing, our accessories are designed to support the building's performance under real-world conditions.

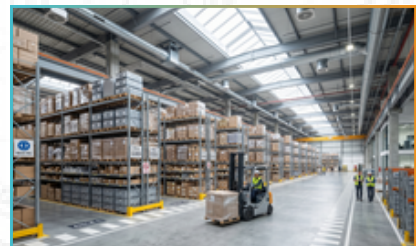
Our solutions are engineered to improve ventilation, natural lighting, water management, and structural protection, ensuring that each building operates efficiently while maintaining a clean, modern appearance.

With a focus on precision and quality, we ensure that every component contributes to a cohesive, high-performance system that meets both functional and aesthetic requirements.

System Components

Our range of building accessories includes engineered solutions such as turbo ventilators, ridge ventilators, skylights, louvers, roof monitors, canopies, fascia systems, and advanced rainwater drainage systems.

Each component is designed to integrate seamlessly with the primary structure, ensuring consistent performance and long-term reliability.



Certified Excellence

At **Aavishkar - The Metal Designer**, we are committed to maintaining the highest standards of quality, safety, and engineering excellence. Our processes and systems are aligned with recognized industry certifications, ensuring reliability and trust in every project we deliver.



MANAGEMENT SYSTEM CERTIFICATE 

www.royalapl.com

This is to certify that

E-BLOC INFRA LLP

SURVEY NO. 760, 760/2/4, 760/3, 762/4, 762/5, 763/1, 764/1/2, INDORE HIGHWAY, ANARA VILLAGE, KATHLAL, KHEDA - 387630, GUJARAT, INDIA.

has been assessed by RAPL and found to comply with the requirements of

ISO 9001 : 2015
Quality Management Systems

For the following activities:
DESIGN, MANUFACTURE, SUPPLY, ERECTION & COMMISSIONING OF PRE-ENGINEERED STEEL BUILDING & HEAVY STRUCTURE STEEL COMPONENTS.

Certificate Number: E20260141118
Date of Certification: 07/01/2026
1st Surveillance on or before: 06/01/2027
Insd Surveillance on or before: 06/01/2028
Certification Valid Until: 06/01/2029



Accredited
OHSMS Certification CAB# 119012

Director (Certification)
Royal Assessments Pvt. Ltd.
623 A, Tower-B, IThum, Plot No. A-40, Sector - 62, Noida 201301, India.
www.royalapl.com, info@royalapl.com
Phone : +91 120 4251329
This Certificate can be verified at www.iafcertsearch.org

This Certificate is an endorsement of certified clients certification status but remains the property of Royal Assessments Pvt. Ltd. Certificates must be returned on RAPL's request or if certificate is withdrawn. Validity of certificate is subject to successful re-audit.



MANAGEMENT SYSTEM CERTIFICATE 

www.royalapl.com

This is to certify that

E-BLOC INFRA LLP

SURVEY NO. 760, 760/2/4, 760/3, 762/4, 762/5, 763/1, 764/1/2, INDORE HIGHWAY, ANARA VILLAGE, KATHLAL, KHEDA - 387630, GUJARAT, INDIA.

has been assessed by RAPL and found to comply with the requirements of

ISO 45001 : 2018
Occupational Health and Safety Management Systems

For the following activities:
DESIGN, MANUFACTURE, SUPPLY, ERECTION & COMMISSIONING OF PRE-ENGINEERED STEEL BUILDING & HEAVY STRUCTURE STEEL COMPONENTS.

Certificate Number: E20260141126
Date of Certification: 08/01/2026
1st Surveillance on or before: 07/01/2027
Insd Surveillance on or before: 07/01/2028
Certification Valid Until: 07/01/2029



Accredited
OHSMS Certification CAB# 119012

Director (Certification)
Royal Assessments Pvt. Ltd.
623 A, Tower-B, IThum, Plot No. A-40, Sector - 62, Noida 201301, India.
www.royalapl.com, info@royalapl.com
Phone : +91 120 4251329
This Certificate can be verified at www.iafcertsearch.org

This Certificate is an endorsement of certified clients certification status but remains the property of Royal Assessments Pvt. Ltd. Certificates must be returned on RAPL's request or if certificate is withdrawn. Validity of certificate is subject to successful re-audit.

Quality Commitment

- Strict adherence to global quality benchmarks
- Continuous monitoring and process improvement (PDCA approach)
- Precision engineering and inspection at every stage
- Focus on safety, sustainability, and performance

Why It Matters

- Ensures consistent product quality
- Enhances structural reliability and durability
- Minimizes risks and project delays
- Builds long-term client confidence

Engineered for Excellence

At Avishkar, our strength lies in advanced manufacturing and precision-driven processes, powered by cutting-edge technology and an uncompromising commitment to quality.

Manufacturing Excellence

- Advanced machinery and precision-driven manufacturing ensure superior build quality and consistency in every structure.
- Use of high-grade materials combined with strict quality control guarantees durability, strength, and long-term performance.



Precision in Every Detail. Strength in Every Structure.



E-BLOC INFRA LLP

CONTACT US

Phone - +91 90974 90974 / 76006 64095

E-mail - marketing@eblocinfra.com

Website - www.eblocinfra.com

Office - Office no 416, The Capital Business Space B/h Nikol Police Station, Gangotri Road, Opp. Suvas Scala, Nikol, Ahmedabad, Gujarat - 382350.

Factory - E-BLOC INFRA LLP Survey No. 760-2+4, 760, 760-3, 762-4, 762-5, 763-1, 764-1+2, 766-2, Anara Mahisha Road, Village - Anara, Taluka - Kathlal, District - Kheda, Pincode- 387630